



Creating Smarter Workplaces



About GXI

Who We Are

We are a team of passionate people who specialise in end to end office fit out and refurbishment.

Our approach is refreshingly transparent, truly personal and caringly responsible, and we have a lot of fun too. We genuinely love and really care about what we do which makes working with us an exciting and stress free experience.

More About GXI

Since over 20 years we have been creating workspaces all over the UK with our client's business in mind. We take time to understand their business and it's requirements and then create beautiful workplaces which encourage intelligent and efficient working and help increase productivity.

When we say end to end solutions, we mean it. We work with you from the outset. Right from securing office premises through to building regulations, fire safety, refurbishment, fit out and furniture.

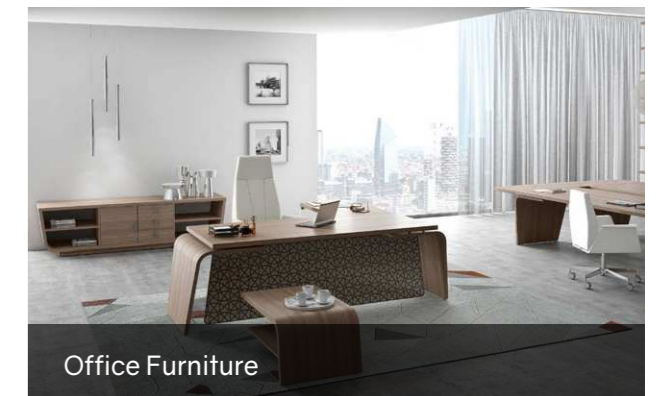
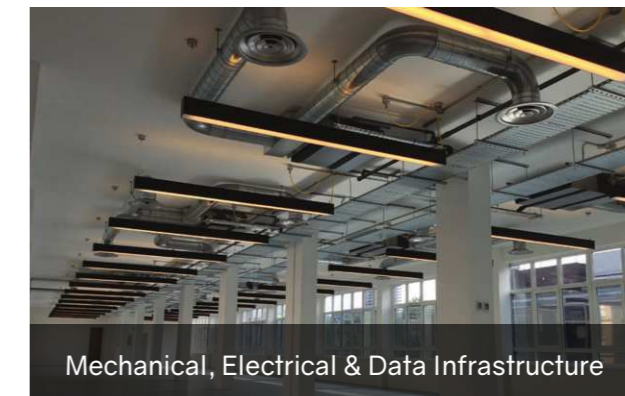
What makes us different is our **passionate enthusiasm** for every project, be it small offices to an entire building of serviced offices.

For clients' office furniture requirements, we believe that we don't deliver a product, we deliver an experience and we go to great lengths to fulfill that. Our interior designers travel around the world to source beautiful furniture for you. We believe that furniture is as much about function as style.

GXI have successfully completed hundreds of projects in London, Bristol, Southampton, Birmingham, Manchester, Aberdeen, Middlesex, Elstree, Milton Keynes, Leicester, Croydon, Gatwick, Slough, Stevenage, Leeds, Wokingham, Watford, Borehamwood, Reading, High Wycombe, Kent.



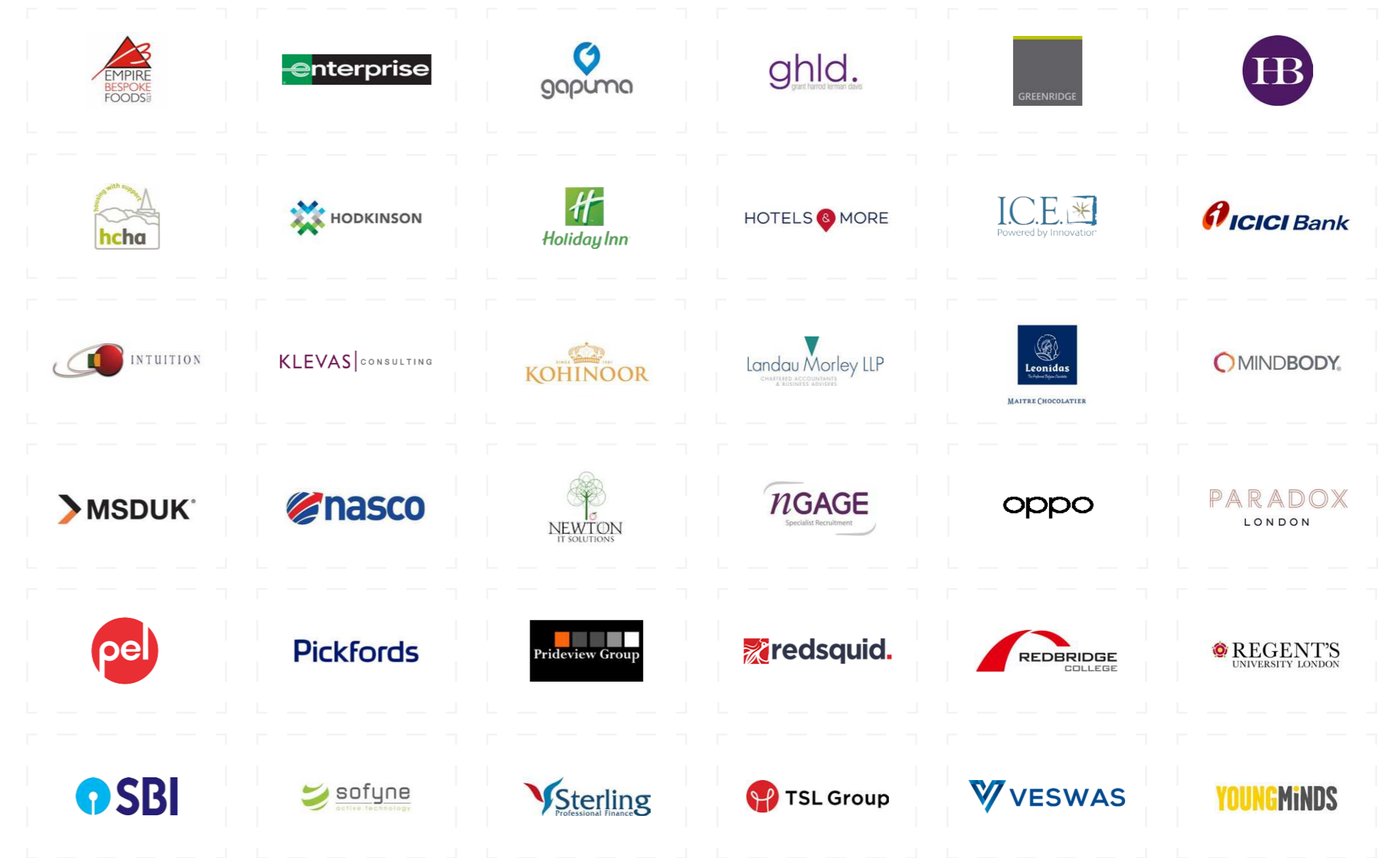
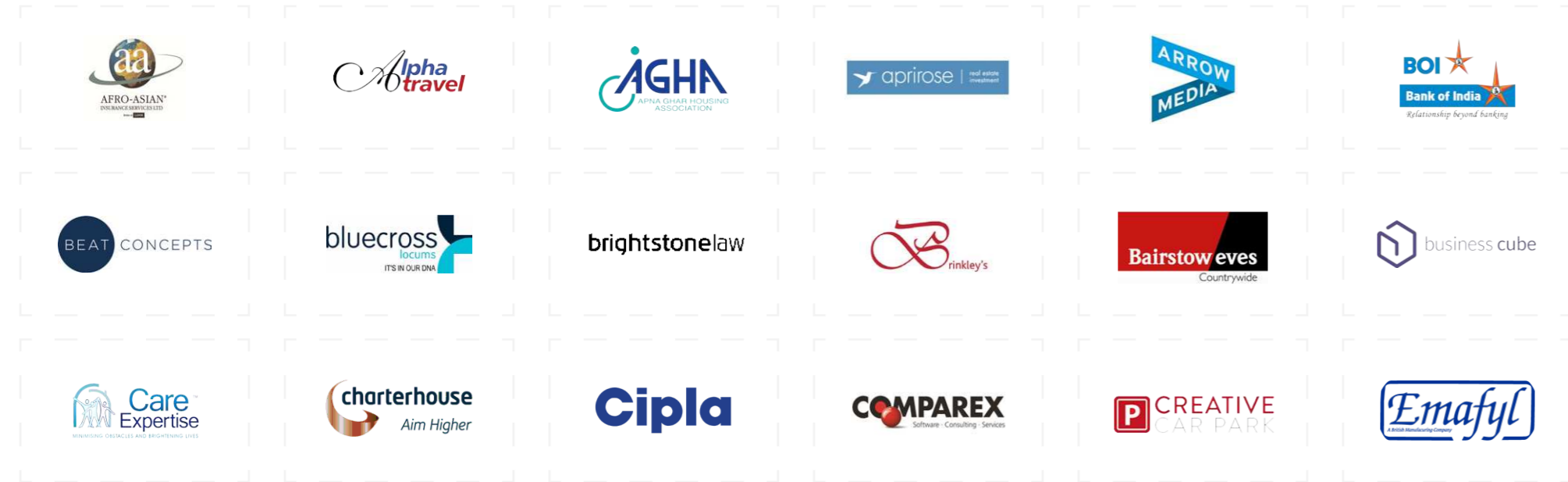
Our Services



Our Certificates & Accreditations



Our Clients





Our Work

Diverse Experience

We have worked with clients from diverse industries, right from Banking, Accountants and Law Firms, through to Cafes, Hotels, Housing Associations, Serviced Offices and many more.

The type of projects we have handled are Offices, Warehouse, Universities, Hotels, Spas, NHS GP & Dental Practices, Retail, Banks, Showrooms and many more



nGAGE Recruitment

Moorgate, London
Recruitment
7,300 sq. ft / 680 sq. mt

This was our fourth project with nGAGE Recruitment. Being in the recruitment business, maximum meeting spaces were required. We created several pods, meeting rooms and break-out areas to facilitate formal and informal discussions while also making space for future expansion.

Their global presence made it easier to create themes for each meeting room. We introduced subtle change in the feel from one room to the other by accenting one wall with a digital wall covering.

Also to mention was the beautiful installation of the interactive black glass TV wall which not only allowed presentation on the screen, but also let you write on it. Alongside working with the existing Dali system, we introduced latest lighting technology in the key areas.





Emafyl

London
Manufacturing & Property Management
4,500 sq. ft / 420 sq. mt

Our brief was to transform their new shell & core space into a high end luxurious office. The client wanted a hands-off turnkey solution and trusted GXI with the total end to end service.

Our design team held detailed workshops with the client at GXI Design Studio, studying their business, design preference and overall look and aspirations for the new office. The showstopping designer furniture brought in natural elements like leather inset and unglazed porcelain into every day working.

In the boardroom, we used reclaimed wood mosaic panel made from ethically sourced roots of trees many years old and nicely balanced with sound absorbing acoustic panels. The authentic ergonomic chairs were lovingly manufactured in Italy and shipped with care to the UK.





Comparex

London
IT
3,000 sq. ft / 280 sq. mt

Comparex is a leading global platform, solutions and services provider. As part of their rapid expansion plan in the UK, they needed planning, design and fit out all done within a very short duration.

Need of hot-desking in break-out areas, several training & meeting rooms as well as accommodating all the office staff was a space planning challenge we very successfully delivered on. The hot desks nicely blended as a breakout area giving the required agility and space.

The orange and grey colours with a zing of green not only complemented the logo, but also the vibrant and open culture of the organisation. The furniture and finishes were specially handpicked to reflect the same.





Creative Car Park

London
Car Park Management
12,000 sq. ft / 1,115 sq. mt

Creative Car Park are one of the leading UK Car Park Management companies. The client entrusted GXI with office space planning, refurbishment and fit out and wanted the overall look to be fresh and tasteful, and each floor to be different, but the same.

The entire office was perfectly planned to accommodate different departments on different floors, ample meeting rooms, Senior Management offices, an entire floor dedicated to break-out area, kitchen, and comfy seating.

The gorgeous and sturdy office furniture was sourced from Italy and perfectly matched the overall look. All the floors used the same carpet but with different colour insets to make each floor distinctive.





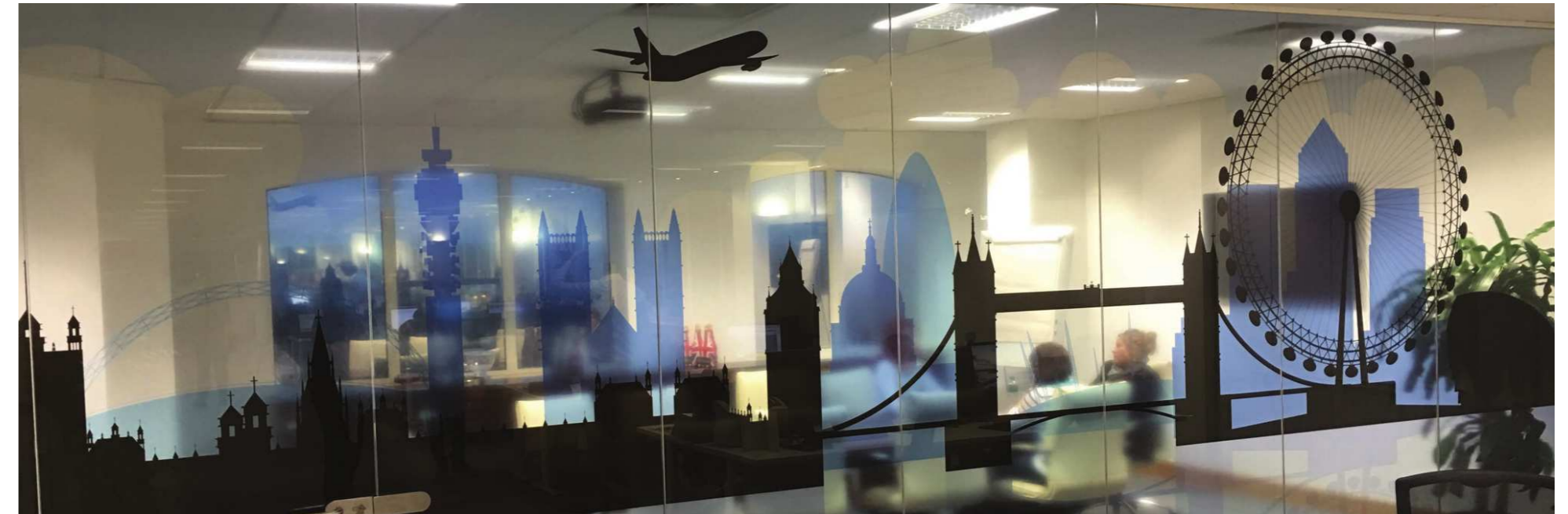
Hotels & More

London
Travel
7,000 sq. ft / 650 sq. mt

Hotels & More are a leading B2B specialist for group and individual travel to Great Britain and Ireland. They acquired a new office and entrusted GXI with CAT B design & build fit out.

We held a couple of insights and design workshops with the client at GXI Design Studio. These discussions helped us to accurately represent their brand and what they stand for. They needed their office to reflect their global reputation, but still maintaining the Britishness. They wanted a workspace that would energise their staff and create a remarkable working environment.

When designing and planning, we took their space utilisation, daily operations, company culture and branding into consideration. Hotels & More's British and Irish flag colour scheme was nicely dotted throughout the space and brought together all the areas of the office. London's skyline used as a glass manifestation was loved by everyone and so were the red insets depicting a part of the Union Jack. The office was open plan with a large, classy boardroom that doubled-up as an event space.





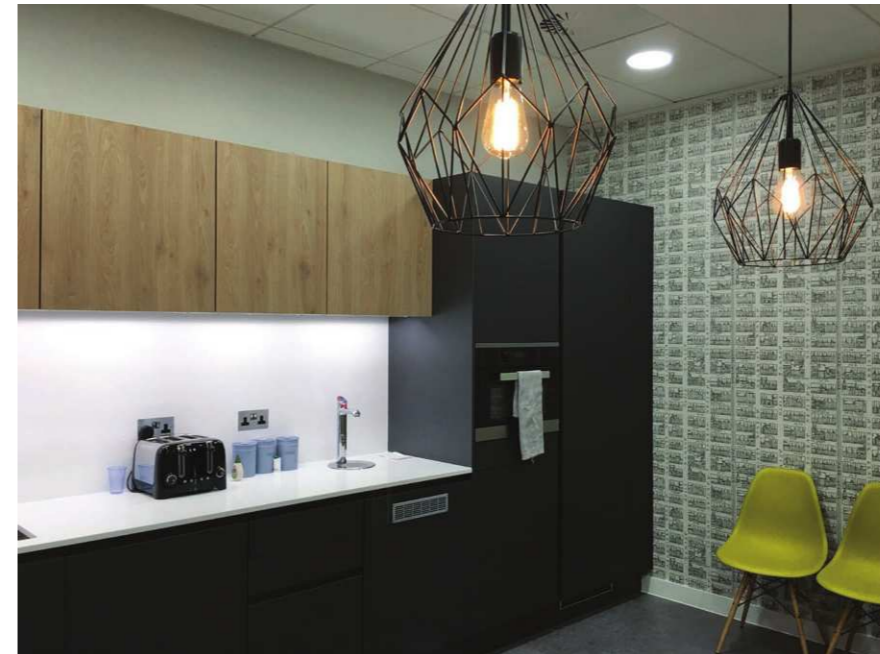
Gapuma (UK) Ltd

Kew Bridge, London
Global Trade
5,250 sq. ft / 490 sq. mt

This was our second project with Gapuma, a Queen's Award winning exporter. It was a highly complex Shell & Core office fit out project in a prestigious development on the banks of River Thames.

We were required to be considerate of easy communication between departments generating movement throughout the space to prevent working in silos.

Using a lot of glass allowed transparency within the office and the walnut veneered doors catered to reducing the sound levels maintaining the acoustics within each room. The contrast of carpet and furniture and the use of yellow colour made the space pop giving it a modern and contemporary feel.





Sofyne Active Technology

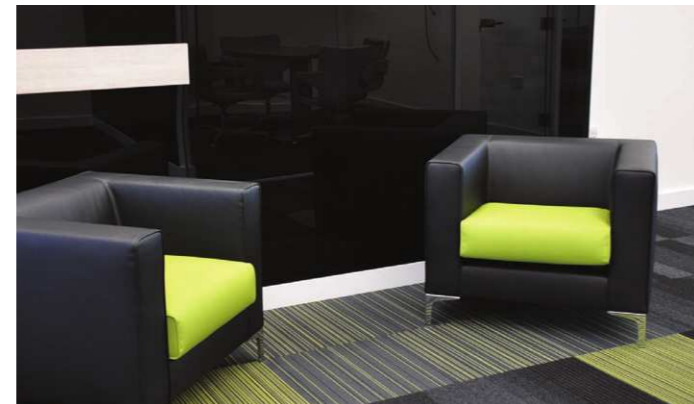
Holborn, London
Technology
3,000 sq. ft / 280 sq. mt

This was our second project with Sofyne. It was a CAT B turnkey design & fit out project right in the heart of London.

Due to tight timeframe this became a challenging project. However, expert project management and team work allowed the project to be completed a week early.

The project involved a full gamut of services - Space Planning & Design, Acoustic Glass Partitioning, AV Installation, IT Data Networking with Plug n Play connectivity, through to flooring, furniture and signage.

The lime green brand colour was intelligently used throughout the office to give an identity without making it too garish.





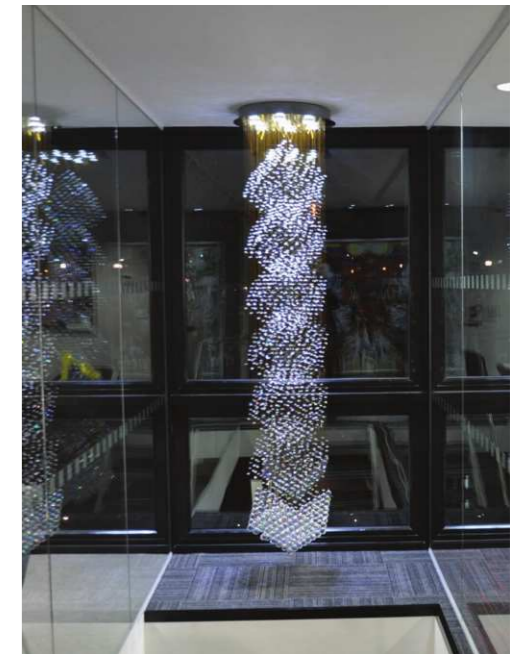
Paradox London

London
Designer Shoes
15,000 sq. ft / 1,400 sq. mt

Having outgrown their previous workspace, Paradox took an empty warehouse which needed full transformation from a neglected space to beautiful showroom, office and warehouse.

The exterior of the building was designed as a shoe box while the interior was carefully designed and transformed from shell & core to complement the luxury shoes.

A fusion showroom boardroom was created with shoe displays highlighting the style. Glass was introduced in the workspace to encourage open communication and collaboration. Diamonds were used in chandelier and other lighting to complement the Swarovski diamonds studded range.



Client Testimonials



“GXI are one of the most professional, knowledgeable and straight forward organisations I've ever dealt with. Communication was open and transparent from day one. They worked tirelessly with high levels of enthusiasm and always exceeded expectations. Their experience and knowledge in every aspect of office refurbishment and beyond is very evident in how smoothly they operate.”

Jack Bardakjian
Group Director



“I have worked with GXI now for almost 10 years and during that period they have carried out many fit out projects for us across a number of UK offices. These projects have varied from 2,000 to 10,000 sq ft. They have always continued to pull out all the stops to meet my requirements”

Adam Harron
Group Chief Operating Officer



“The professional and friendly team at GXI were a pleasure to work with. They are subject matter experts and they seamlessly handled BREEAM assessment and achieved the required rating. We are very happy with our office including the quality of materials used. I would surely recommend them”

Yi-Weng Liu
Managing Director



“GXI Group are a great office refurbishment company. Right from day one they impressed me with their passionate and professional approach. The space was planned to get best utilisation of every inch. GXI were very responsive and completed the project on time and within the budget. I can't recommend them enough.”

Bob Shaikh
Managing Director



“Everyone that visits our office is very complimentary of the new office layout and the office environment that has been achieved. This was a very successful relocation project made so much easier by our choice of office design and fit out partner. From start to finish I found the design and fitting out process with GXI an enjoyable experience.”

Raj Chohda
Finance & IT Director

The GXI team were professional , flexible and proactive to provide solutions and options for us to consider. We worked on various concept designs, which they listened to, understood our requirements and tailored the designs accordingly.



The team was easy to communicate with and continually active in thinking about further improvements as we went along with the project. They were always available on site when required and personally managed the project with great professionalism. They provided regular updates with images, clarifications and explanations which greatly helped to manage the various milestones and complete the project on time. We would highly recommend them.

Nimesh Shah
Finance Director



Phone: 020 3915 8000

Email: info@gxigroup.com

Website: www.gxigroup.com

